

A large red square with a white border, containing text.

BorderLight Festival Know Before You Go Guide

**BorderLight Theatre
Festival**

Entering from Euclid Ave.
and going to
Miller Classroom

I am going to see an accessible performance at BorderLight Festival.

It will take place at the Idea Center, located at 1375 Euclid Ave, Cleveland, OH 44115.

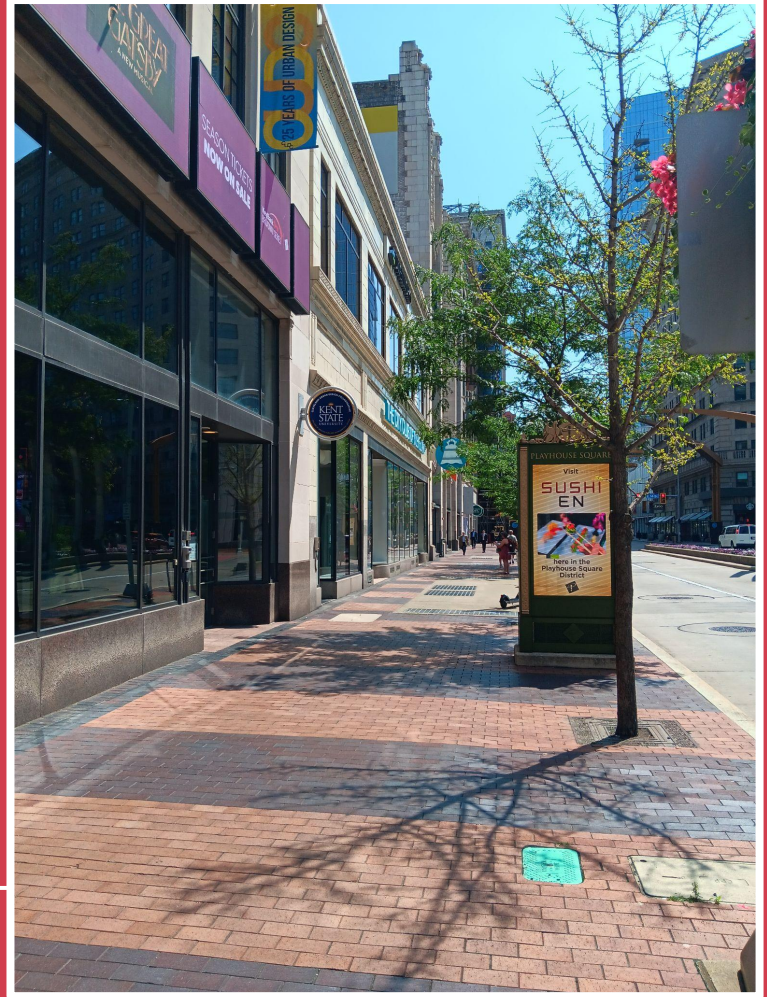
Shows happen between July 16–19, 2025.



I am at the Playhouse Square
Plaza and crossing intersection of
E. 13th and Euclid Avenue.



I am taking a right and walking
along Euclid Ave.



I will pass this landmark to my right and continue walking.



I will walk through the double doors when I enter from the Euclid entrance.



When I look straight ahead, I will
walk through the glass double
doors.



When I walk in through the double glass doors, I will see a security desk on the left side.



When I walk straight ahead, I will
see two colorful elevators.



I will walk to the left of the colorful elevators and see a hallway with double doors.



I will walk past the double doors
and through a hallway.



If I look to the right.
I will see an elevator.



I will go inside the elevator and
push the LL button to go
downstairs for to the Miller
Classroom.



When I arrive to the the lower level floor, I will exit a yellow/green elevator.



When I get out of the elevator, I will go to the right and see Miller Classroom's double doors.



When I walk through the double doors, I will be inside Miller Classroom.



On the right side of the classroom, I will see double doors leading me to a hallway.



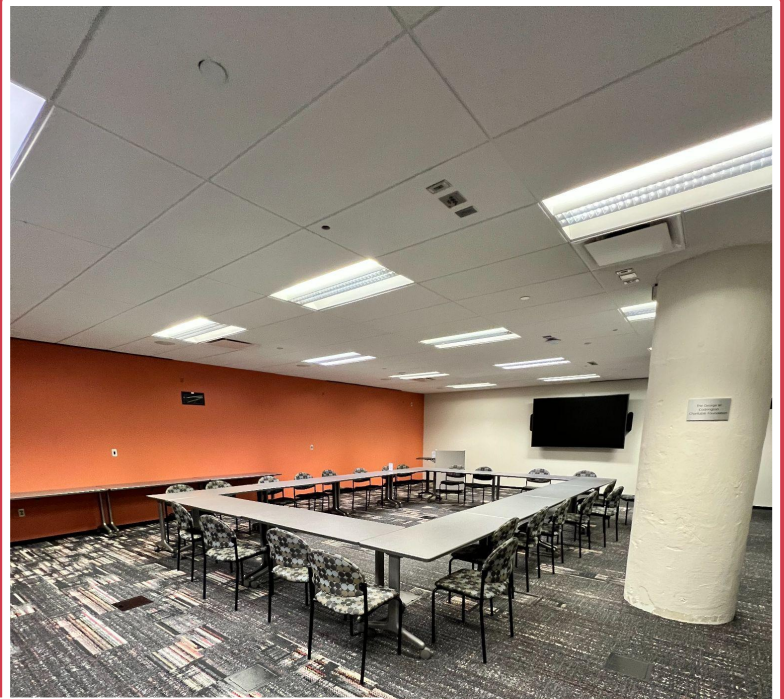
When I walk through the doors, I
will see a hallway.



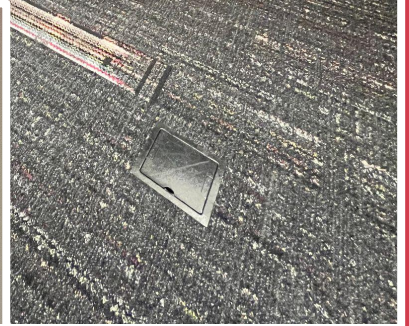
If I need a quiet space, I will go to the white double doors on the left side of the hallway.



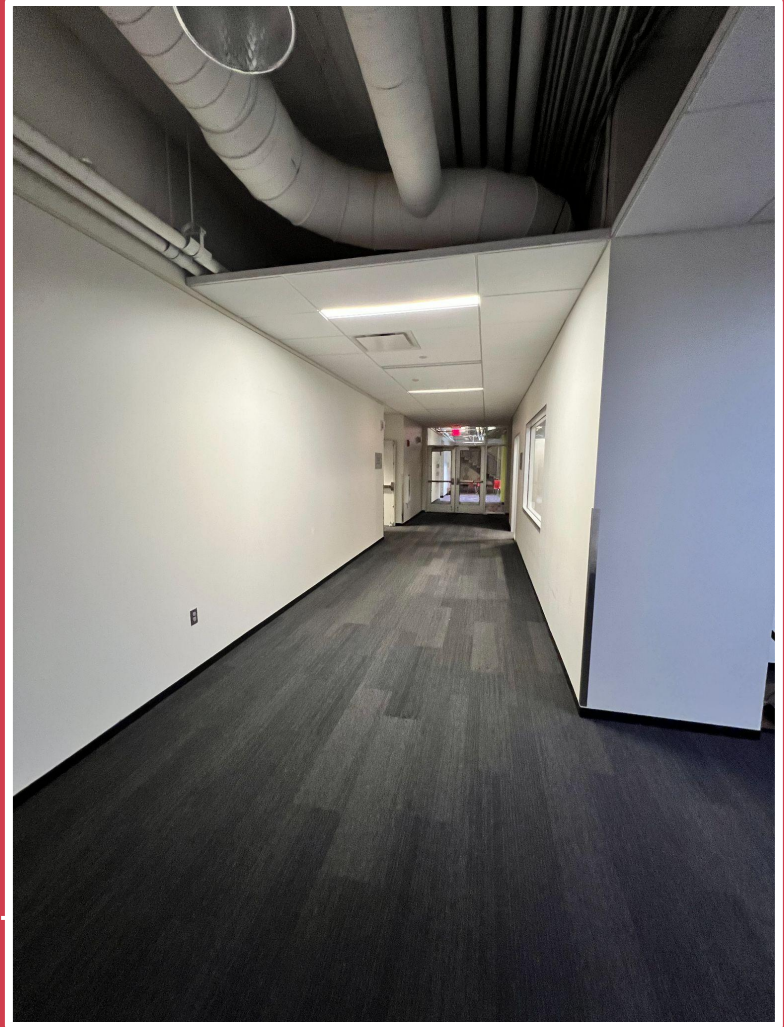
When I walk through the doors, I
am now inside the Brown Room,
which is known as the Quiet
Space.



Jeanette Grasselli Brown
& Glenn R. Brown
Teaching Lab



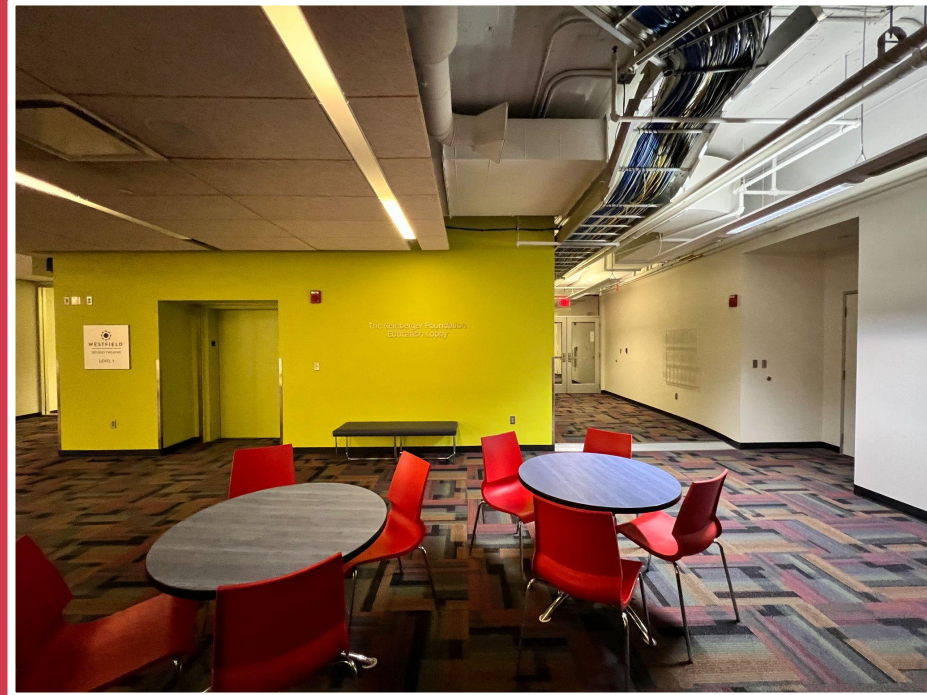
When I leave the Quiet Space, I will see a hallway with pair of glass double doors at the end.



When I walk to the end of the hallway, I will go out the doors.



When I walk through the doors, I will end up in the large room called PB & J Room where I started.



If I have to use the bathroom, I
will go to the hallway off of the
PB & J Room.

