

**BorderLight**  
THEATRE FESTIVAL



Artwork By: Charlie Malta aka "Guice Mann"

2026 BORDERLIGHT THEATRE  
**FESTIVAL  
GUIDE**

123+ PERFORMANCES • 2 WORKSHOPS • 15 STAGES

**WED. JULY 8 - SAT. JULY 11, 2026**

[BorderLightCLE.org](http://BorderLightCLE.org)

# STAFF

## BORDERLIGHT

**Dale Heinen**  
Executive & Artistic  
Director, Co-Founder

**Jeffrey Pence**  
Co-Founder

**Sophia C. Gordon**  
Marketing Manager

**Donna Gracon**  
Development Manager

**Yazmin Maldonado**  
Dir. of Operations and  
Communications

**Kadijah Wingo**  
Producer

## SEASONAL FESTIVAL TEAM

**Megan Anderson**  
Volunteer Manager

**Sarah Bene**  
Digital Media Coordinator

**Samira Hassan**  
Box Office Manager

**Brooke Little + Karina Lovins**  
BorderLight Theatre  
Festival Interns

**Palmer Event Solutions**  
Production & Event Logistics

**Debby Samples**  
Marketing Specialist

**Jennifer Vinson**  
Staffing Manager

**Mark Yasenchack**  
Box Office Manager

## BOARD MEMBERS

**Rachel Costanzo**  
INTERIM PRESIDENT  
Director & Senior Consultant,  
The Acuity Group

**Luis Cartagena**  
TREASURER  
President/CEO, Cartagena  
CPA & Consultants, LLC

**Dr. Felicia Phillips**  
SECRETARY  
Master Business Strategist &  
CEO of PPICW

**Amb. Gina Abercrombie-  
Winstanley**  
Distinguished Fellow,  
Atlantic Council; United  
Stated Ambassador (Ret.) &  
Keynote Speaker

**Hannah Belsito**  
Chief Experience Officer,  
Destination Cleveland

**Jon Bloomberg**  
Attorney, Squire Patton Boggs

**Jason R. Bristol**  
Partner, Cohen Rosenthal  
& Kramer LLP

**Patrick Espinosa**  
Managing Partner, Sus  
Abogados Latinos

**Char Fowler**  
Community Leader

**Audra T. Jones**  
CEO, Krystal Klear  
Communications

**Dan Moulthrop**  
Chief Executive Officer,  
City Club of Cleveland

**Megan O'Bryan**  
VP, Development & President,  
Tri-C Foundation

**Jenny Pykett**  
Procurement Consultant

**Rab Razzak, MD**  
Palliative Medicine Physician  
Sutter West Bay Med Group

**Terry Stewart**  
Advisory Board, The  
Museum of Jazz & Art  
(Oakland CA); Advisory  
Board, The Louisiana Music  
& Heritage Experience;  
Former CEO & President,  
The Rock & Roll Hall of Fame;  
Former President & COO of  
Marvel Comics

LEADING  
SUPPORT BY

THE  
GEORGE  
GUND  
FOUNDATION

PAUL M. ANGELL  
FAMILY FOUNDATION

CLEVELAND  
Foundation

FESTIVAL GUIDE  
SPONSOR:



NEW YORK TIMES  
INSERT SPONSOR:



2026 FESTIVAL  
ARTWORK:  
CHARLIE MALTA AKA "GUICE MANN"

FESTIVAL  
GUIDE DESIGN:  
ROB ORTENZI + DEANNA ZAMUDIO

## CONTACT

MAILING ADDRESS:  
BorderLight Theatre Festival  
11459 Mayfield Rd.,  
#337, Cleveland, OH 44106

WEBSITE: [www.borderlightcle.org](http://www.borderlightcle.org)  
PHONE: 216.356.6485



@BORDERLIGHTCLE  
#BorderLight

# Welcome to BorderLight 2026!

**BorderLight returns** to the Playhouse Square District as Cleveland's international theatre festival, bringing together local, national, and global artists for four high-energy days of performance.

With 43 shows and 123 performances across 15 stages in 7 venues, this year's festival offers a vibrant mix of free and ticketed work. You're also invited to engage beyond the stage through interactive workshops and special events.

The lineup spans comedy, drama, immersive, and experimental work, with options for all audiences, including family-friendly options. You can explore by interest using our Spotlights or browse by genre, date, and more on our website.

Between shows, enjoy free programming at Playhouse Square Plaza, including the International Plaza, line dancing, and busking. With a walkable footprint and back-to-back scheduling, it's easy to see multiple performances in a single visit.

—The Festival Team



## TABLE OF CONTENTS

- 3** Ticket Info
- 4** Getting Here
- 6** Festival Map
- 7** Venues and Stages
- 8** Fringe for the Family & International Plaza
- 10** Show Spotlights
- 12** International Programming
- 14** Workshops
- 16** Partner Shows
- 20** Fringe Shows
- 27** Double Bills
- 30** Special Events
- 33** Wednesday Schedule
- 34** Thursday Schedule
- 36** Friday Schedule
- 38** Saturday Schedule
- 40** Thank You's





# TICKETS + BOX OFFICE

## THE GEORGE GUND FOUNDATION

Proud Supporter of  
the BorderLight Theatre  
Festival

[gundfoundation.org](http://gundfoundation.org)

1660 West 2nd Street, Suite 900, Cleveland, OH 44113

### BUY TICKETS:

#### IN ADVANCE

##### ONLINE

Explore this season's shows and purchase tickets or ticket packs in advance at [www.borderlightcle.org](http://www.borderlightcle.org). After purchasing, you'll receive an email confirmation with electronic tickets. These can be shown at the door on your phone or as a printed copy.

##### VIA PHONE

Box office support will be available **May 6 – July 11** by leaving a message at **216-356-6485**.

#### IN PERSON

##### AT BORDERLIGHT BOX OFFICES

From **July 8 – 11**, tickets can be purchased at our **MAIN BOX OFFICE @ CITY CLUB**  
1317 Euclid Ave, 44115

Wednesday 7/8 : 2PM–9PM  
Thursday 7/9 : 3PM–9:45PM  
Friday 7/10 : 3PM–9:45PM  
Saturday 7/11 : 12PM–8:45PM

Tickets are also available 1 hour prior to show time at:

- **THEATRE & ARTS BUILDING @ CSU**  
1901 E. 13th Street, Cleveland, Ohio 44114, 5th Floor
- **HERMIT CLUB**  
1629 Dodge Ct, Cleveland, OH 44114

#### FREE LOOK FOR THE FREE ICON IN SHOW LISTINGS!

The BorderLight Theatre Festival includes a number of free, all-ages performances. Free events held inside venues require advance registration due to limited seating. Please visit the show page at [www.borderlightcle.org](http://www.borderlightcle.org) to register.

**QUESTIONS?** Call 216-356-6485 to leave a message or email [boxoffice@borderlightcle.org](mailto:boxoffice@borderlightcle.org).

### PRICING:

#### FRINGE FESTIVAL SHOWS

|   |                |
|---|----------------|
| Standard .....                            | <b>\$16.50</b> |
| Students, Veterans, and Seniors 65+ ..... | <b>\$15</b>    |
| Youth (age 6-14) .....                    | <b>\$11.50</b> |
| Children (5 and under) .....              | <b>FREE</b>    |

#### INTERNATIONAL PROGRAM

(PETER IS BACK, LOS REGALOS):

|   |             |
|---|-------------|
| Standard .....                            | <b>\$38</b> |
| Students, Veterans, and Seniors 65+ ..... | <b>\$34</b> |

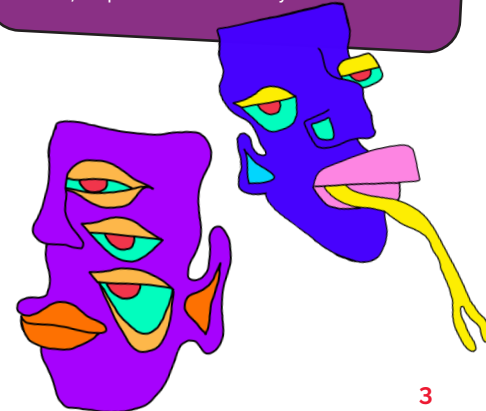
#### BINGE-ON-FRINGE PACKS

SEE MORE. SAVE MORE

|                      |              |
|----------------------|--------------|
| <b>FRINGE:</b>       |              |
| <b>4-PACK</b> .....  | <b>\$60</b>  |
| <b>8-PACK</b> .....  | <b>\$112</b> |
| <b>12-PACK</b> ..... | <b>\$156</b> |

Ticket packs offer up to 20% savings per ticket and are valid for Fringe performances only.

Binge-on-fringe packs are flexible! Use packs however you like—see multiple shows, share with friends, or spread them across days.



# GETTING HERE

**BorderLight Theatre Festival** activities will take place in the Playhouse Square District. We recommend the following methods of getting to Downtown Cleveland:

## PUBLIC TRANSIT



Cleveland's Regional Transit Authority (RTA) operates bus and rail service throughout the city. The HealthLine runs along Euclid Avenue through Downtown and Midtown, with stops near Playhouse Square. Ride from Tower City or University Circle and hop on the HealthLine within minutes. Visit RTA's website to plan your trip and purchase fares: [www.riderta.com](http://www.riderta.com)

## BY BIKE & SCOOTER



If you live nearby or are staying downtown, consider biking or using Cleveland's bike share options. Visit Bike Cleveland for more details: [www.bikecleveland.org/bikeshare](http://www.bikecleveland.org/bikeshare)

## BY CAR, CAB, RIDE SHARE



If you choose to drive, consider carpooling. We've also provided a parking map with recommended nearby parking options: <https://bit.ly/26parking>

## WALK



All BorderLight venues are located within the Playhouse Square District, making it a safe and easy area to walk between locations. **The longest walking distance between venues is .3 miles (5-7 minutes).**



Supporting arts and culture, community and higher education in Northeast Ohio.



A Passion for music. A commitment to music therapy research.



# Where community, culture, and collaboration collide.

THE *Sixty6*

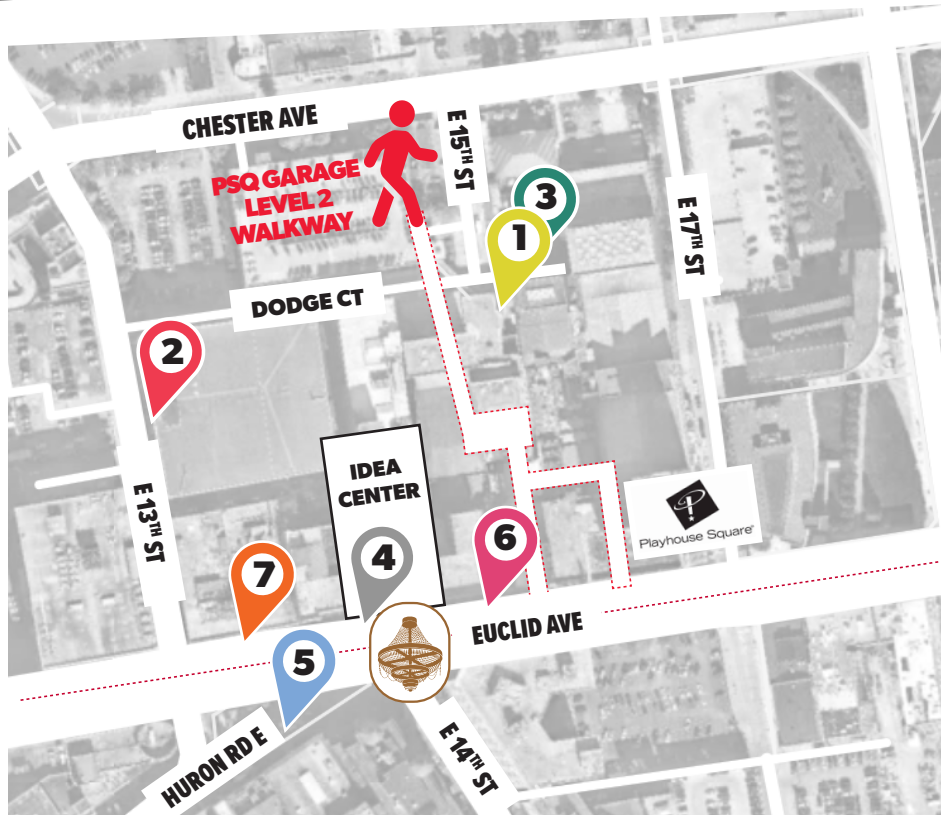


[thesixty6.com](http://thesixty6.com)

MidTown Collaboration Center | 1966 East 66th Street, Cleveland, OH

/The Sixty6 /thesixty6cle

# FESTIVAL MAP + VENUES



## PLAN YOUR VISIT WITH ACCESSIBILITY RESOURCES

### Visit our Accessibility page to find:

- Know Before You Go guides
- ASL-interpreted and relaxed performances
- Wheelchair-accessible routes, seating, and restrooms
- Parking information
- Service animal guidance
- Venue accessibility details by location



### Have a question or need support?

Our team is here to help. Find answers at: [borderlightcle.org/accessibility26](https://borderlightcle.org/accessibility26) or scan the QR code.

**1 PLAYHOUSE SQUARE LOADING DOCK**  
*Outside; directly across from the Hermit Club Patio.*  
**ADDRESS:** 1501 Dodge Ct., Cleveland, OH 44115  
*NOT ACCESSIBLE FROM INSIDE PLAYHOUSE SQUARE.*

**6 PARNELL'S IRISH PUB**  
**ADDRESS:** 1415 Euclid Ave., Cleveland, OH 44115  
**STAGES:** Lounge, Snug  
 Snug only

**2 THEATRE & ARTS BUILDING @ CLEVELAND STATE UNIVERSITY**  
**ADDRESS:** Cleveland State University, 1901 E. 13th Street, Cleveland, Ohio 44114  
**STAGES:** Allen Rehearsal Hall (505), Black Box Theatre (521), Helen Rehearsal Hall (504), Large Dance Hall (523)

**7 CITY CLUB OF CLEVELAND**  
**ADDRESS:** 1317 Euclid Ave., Cleveland, OH 44115

**3 HERMIT CLUB**  
**ADDRESS:** 1629 Dodge Ct, Cleveland, OH 44114  
**STAGES:** Patio, Grille, Great Hall  
 Patio & Hall only

**4 IDEA CENTER AT PLAYHOUSE SQUARE**  
**ADDRESS:** 1375 Euclid Ave., Cleveland, OH 44115  
**STAGES:** Brown Lab, Gund Dance Studio, Miller Classroom, Westfield Studio Theatre

**5 PLAYHOUSE SQUARE PLAZA**  
**ADDRESS:** 1350 Euclid Ave., Cleveland, OH 44115  
**STAGES:** Festival Social Hub, International Plaza Stage

**KEY**

- ADA Accessible
- Restrooms
- Gender Neutral Restrooms
- Bar/Alcohol
- Food/Concessions
- Festival Info + Festival Box Office

# FRINGE FOR THE FAMILY

## FOR CURIOUS KIDS. AND ADULTS WHO STILL ARE.

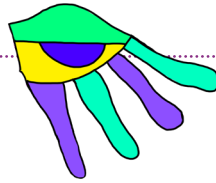
Across the festival, you'll find performances, both free and ticketed, that are welcoming and engaging for a wide range of ages. Each show listing (see pages 12–28) includes an age recommendation.

### CHILDREN'S THEATRE HIGHLIGHTS INCLUDE:

- Le Tournesol (France)
- Gr33n Hamzies & Eggoes
- The Lion, the Witch, and the Wardrobe *presented by Talespinner Children's Theatre*

### ALL-AGES FAVORITES:

- Tales from the Bard
- Improvsburg
- Peace(co)lab
- Well-Balanced Dads



## INTERNATIONAL PLAZA

### FREE. ALL AGES. ALL OUTSIDE.

During the festival, Playhouse Square Plaza becomes the International Plaza, a lively space for performances, surprises, and spontaneous moments. Activity varies, with most programming happening in the evenings and throughout the day on Saturday. You might catch Shakespeare, Irish dancing, Kung Fu, street dance, or something completely unexpected.

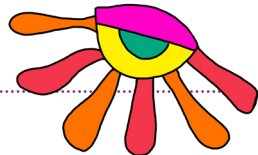
Take your chances. Stop by between shows. See what's happening. There's seating if you want to stay awhile.

### FRIDAY, JULY 10 7:30–11PM

Linedance Is My Therapy brings families together through music, movement, and connection.

### SATURDAY, JULY 11 6:30–8PM

10K Movement's BorderLight Brawl – Open Styles Dance Battle



Many of our indoor shows are also free. Look for this symbol



Youth (age 6-14) ..... **\$11.50**  
Children (5 and under, lap seating) ..... **FREE**

## PLAN YOUR VISIT

### INTERNATIONAL PLAZA EVENTS ARE FREE AND OPEN TO ALL.



Use our filters to explore by age, interest, and free or ticketed events: [borderlightcle.org](http://borderlightcle.org)

## CLEVELAND ARTS PRIZE PRESENTS

# 66<sup>TH</sup> ANNUAL Awards EVENT 2026

THURSDAY,  
OCTOBER 29, 2026



Cleveland Museum of Art  
Winners announced in August!  
Tickets go on sale in September.  
[www.clevelandartsprize.org](http://www.clevelandartsprize.org)



## MWW Immigration Center

3150 Chester Avenue Cleveland, Ohio 44114

[imwong.com](http://imwong.com) • 216-566-9908 • [wong@imwong.com](mailto:wong@imwong.com)

Atlanta • Chicago • Cleveland • Columbus • Nashville • New York • Raleigh



Margaret W. Wong & Associates LLC, a leading immigration law services firm with more than 200 years' experience, has represented thousands of employers & individuals around the world since 1978. We tailor solutions to your unique immigration needs. We fight for the best outcomes with innovative strategies. We guide clients through complex immigration law that requires thorough, prompt and professional response.

H-1B • Green Cards • Citizenship & Naturalization  
Immigrant & Non-Immigrant Visas  
Employment Authorization • Labor Certifications  
BIA Appeals • Federal Litigation • Criminal Alien Issues  
601A Waiver • Asylum • Deportation Removal • Exclusions

# SpotLight: Shows by interest

## FAMILY FRIENDLY

- The Lion, the Witch and the Wardrobe Touring Version
- Tales from the Bard
- Gr33n Hamzies & Eggoes
- Peace(co)lab
- Le Tournesol
- Improvsburg
- Well-Balanced Dads
- Borderlight Brawl - Open Styles Dance Battle

## HER STORY

- The Art of Becoming A Sacred Bitch!
- To My White Friends Who Know Me
- Nothing in the World Like Love?
- I Hate Memory
- Blessed Unrest: a fantasia on Martha Graham's demons

## LAUGHTER LINEUP

- Con Tú Variety Show
- Real Magic
- Tina's at the End of the World, LIVE!

## PRIDE IN FULL COLOR

- The Stars Made Me Gay
- In Visible Orbit
- Word Play
- New But Familiar
- Our Souls Did Touch

## WORKSHOPS

- Behind the Scene: Building a Live AI Performance
- Physically Integrated Dance Workshop

## IMPROV IMMERSION

- Tales from the Bard
- Improvsburg
- Well-Balanced Dads
- Experiments in Exhaustion Technology
- Klaus Barbie versus the US Government

## OTHERWORLDLY STORIES

- Bell, Book, and Discount Cocktails
- In the Castle of Eternal Sunset
- Le Tournesol

## WHEN THE BODY SPEAKS

- LUMP
- Closed Loop of Consanguinity
- Butterfly Harvest
- H.O.P.E.
- The Soleá Project

## LIBERATION THROUGH MUSIC

- Sheel Sheel
- The Protest Café
- Portrait of MATTMATT
- The Hissy Kits at Ruby Rae's Hideaway

## GLOBAL PERSPECTIVES

- Los Regalos ("The Gifts")
- Peter Is Back
- Postcards from Another World

## DISCOVER NEW VOICES

- Sawdust
- Journey West: The Epic Devised
- Enjoy This EP
- It's all a MESS! An Evening of \*\*Smuttu\*\* Monologues with convergence-continuum
- Who Am I, Again?



# Experience the best of Israeli theater right here in Cleveland! SUMMER OF ISRAELI THEATER

**JUNE**

**"The Goldsmith,"**  
written and performed  
by **Sharone Sayegh**  
June 13 & 14  
Outcalt Theatre  
Cleveland Play House

**JULY**

**"Peter Is Back"**  
July 9, 10, 11  
Playhouse Square District,  
Cleveland

**AUGUST**

**"What's Wrong With  
The World?!"**  
August 12 - 15  
Dobama Theatre

**HERE FOR GOOD** Scan the code to read the complete brochure, or visit [jewishcleveland.org/involved/arts/](http://jewishcleveland.org/involved/arts/)

## CLEVELAND STATE UNIVERSITY

Department of Theatre & Dance

Collaborative & Inclusive Community

Learn.  
Create.  
Perform.  
Thrive.

Support Student Artists • Donate Today

Explore Your Future

[artsandsciences.csuohio.edu/theatredance](http://artsandsciences.csuohio.edu/theatredance)

Playhouse Square Partnership

Professional Performance Venues + Industry Connections



# INTERNATIONAL SHOWS

\* Show times are subject to change. Visit [borderlightcle.org](http://borderlightcle.org) for updates and content advisories.

4

IDEA CENTER WESTFIELD STUDIO THEATRE

## LOS REGALOS ("THE GIFTS") (PERU)

U.S. PREMIERE

SHOWS Fri 7/10 @ 7:00PM • Sat 7/11 @ 7:45PM



CREATED BY Fernando Castro and Diego Sakuray  
DIRECTED BY Fernando Castro **RUN TIME 60**

A father and his two sons live alone. Simple tasks like cooking or cleaning become chaotic adventures. As they navigate daily life, the eldest prepares to leave home, facing the emotional challenge of growing up and saying goodbye. Audience Award, Arena Festival (Germany); Florencio Award, Best Foreign Work (Uruguay); Oficio Crítico Award, Best Director (Peru).

GENRE Physical Theatre **RECOMMENDED 13+** TICKETS Box Office Ticketed

2

(CSJ) BLACK BOX THEATRE (521)

## PETER IS BACK (ISRAEL)

U.S. PREMIERE

SHOWS Thu 7/9 @ 6:00PM • Fri 7/10 @ 8:30PM • Sat 7/11 @ 6:00PM



CREATED BY Amir Yatziv and Noam Gal  
DIRECTED BY Amir Yatziv **RUN TIME 75**



Peter is Back is a live show featuring an AI monkey inspired by Kafka. In a real-time dialogue, Peter reflects on becoming human. Each performance changes live, blurring the line between script and improvisation, control and unpredictability. By internationally acclaimed Israeli artist Amir Yatziv, shown internationally at major museums and festivals. **CONTENT ADVISORY\***

GENRE Performance Art **RECOMMENDED 18+** TICKETS Box Office Ticketed

# Ohio Arts COUNCIL



INVEST | ENGAGE | INNOVATE | LEAD

Investing state and federal dollars, the Ohio Arts Council funds and supports quality arts experiences for all Ohioans to strengthen communities culturally, educationally, and economically.

Learn more about our grant programs and resources, find your next arts experience, or connect: [OAC.OHIO.GOV](http://OAC.OHIO.GOV).



At the City Club of Cleveland, we believe the future is shaped by creating conversations of consequence that help democracy thrive. Find out more about upcoming forums at [cityclub.org](http://cityclub.org) or by scanning the QR code below.



## WOODLAND WEALTH PARTNERS

One Boss: The Client.

Fiduciary wealth management for individuals and families navigating life's most important transitions. Independent. Commission-free.

Always client-first.

We're here to help.



Founded by Brent Luce,  
Portfolio Manager  
(216) 626-3560

[www.woodlandwealthpartners.com](http://www.woodlandwealthpartners.com)



# WORKSHOPS

\*Show times are subject to change. Visit [borderlightcle.org](http://borderlightcle.org) for updates and content advisories.

## 2 (CSU) BLACK BOX THEATRE (521) **BEHIND THE SCENE: BUILDING A LIVE AI PERFORMANCE**

**WORKSHOP Sat 7/11 @ 12:00PM**



**CREATED & LED BY** Amir Yatziv

**RUN TIME** 135

**SUPPORTED BY**  
أكاديمية أرتيس  
**artis**

A behind-the-scenes workshop with artist Amir Yatziv exploring the creation of *Peter Is Back*, from Kafka's original story to live AI performance. Participants get an inside look at how the AI character is built, how script and improvisation interact in real time, and what it means to share a stage with a non-human entity.

**GENRE** Workshop/Masterclass **RECOMMENDED** All Ages **TICKETS [FREE]** Registration Required

## 4 IDEA CENTER GUND DANCE STUDIO **PHYSICALLY INTEGRATED DANCE WORKSHOP**

**WORKSHOP Sat 7/11 @ 1:30PM**




**CREATED BY** Dancing Wheels Company  
**DIRECTED BY** Mary Verdi-Fletcher

**RUN TIME** 60

Engage in an inclusive dance workshop based on the Dancing Wheels Company's foundational principles of translation, equity, accessibility, and meaning. Participants of all abilities will have the opportunity to try dancing in a dance-specific wheelchair.


**GENRE** Workshop/Masterclass **RECOMMENDED** All Ages **TICKETS [FREE]** Registration Required

# Cuyahoga Community College



Where futures begin.

**Safe.  
Reliable.  
Local.**



[clevelandwater.com](http://clevelandwater.com)



**RAINEY INSTITUTE**  
Where the arts change lives




**After School Arts Programs in Dance, Music, Drama, and Visual Art!**



**Just \$30 /week**

**Register today at [RaineyInstitute.org](http://RaineyInstitute.org)**

**PLAN YOUR VISIT TO JOHN CARROLL UNIVERSITY**



**JCU**

  **VISIT PAGE**  
[VISIT.JCU.EDU](http://VISIT.JCU.EDU)

# PARTNER SHOWS

\*Show times are subject to change. Visit [borderlightcle.org](http://borderlightcle.org) for updates and content advisories.

## BORDERLIGHT BRAWL - OPEN STYLES DANCE BATTLE

IN PARTNERSHIP WITH 10k Movement  
RUN TIME 90

An open styles street dance battle featuring some of Cleveland's best dancers across multiple styles. Dancers compete in a bracket-style format representing Hip Hop, House, Popping, Breaking, Krump, and beyond, with no choreography—just freestyle rounds until one remains, showcasing true authentic street dance culture. Three judges decide each matchup, the crowd fuels the energy, and the DJ sets the tone in real time.

**SHOWS** Sat 7/11 @ 6:30PM **GENRE** Dance/Dance Theatre **RECOMMENDED** All Ages **TICKETS** [FREE]

5

(PSQ) PLAYHOUSE SQUARE PLAZA



## CON TÚ VARIETY SHOW

**CREATED & DIRECTED BY** TJ Maclin and Stephanie Ginese  
IN PARTNERSHIP WITH Con Tú  
RUN TIME 60

Comedian and Musician, TJ "Peachcurls" Maclin and poet and comedian, Stephanie Ginese, curate a showcase featuring their favorite comedians, writers, and musicians. Banter, skits, and sketches bookend performances from some of the best artists working in the region. Imagine stepping into detention at an arts school with all the funniest people you know.

**SHOWS** Thu 7/9 @ 8:15PM, Fri 7/10 @ 5:15PM, Sat 7/11 @ 2:15PM, 7:45PM **GENRE** Comedy **RECOMMENDED** 18+ **TICKETS** Box Office Ticketed

3

HERMIT CLUB (PATIO)



## I HATE MEMORY

**WRITTEN & DIRECTED BY** Eszter Balint  
**SONGS BY** Eszter Balint & Stew  
IN PARTNERSHIP WITH Eszter Balint  
RUN TIME 75

An unconventional musical memoir about growing up in the midst of the swirling art scene of downtown New York City. The show combines stories, scenes, songs and immersive projections to follow Eszter from communist Hungary to late 1970s New York, where her makeshift theater family becomes part of an oft-mythologized Manhattan scene made up of devout non-conformists. **CONTENT ADVISORY\***

**SHOWS** Thu 7/9 @ 8:15PM, Fri 7/10 @ 6:00PM **GENRE** Music **RECOMMENDED** 13+ **TICKETS** Box Office Ticketed

2

(CSU) BLACK BOX THEATRE (521)



## IT'S ALL A MESS! AN EVENING OF \*\*SMUTTY\*\* MONOLOGUES WITH CONVERGENCE-CONTINUUM

**CREATED BY** A collection of writers & performers  
**DIRECTED BY** Klæe Bainter **IN PARTNERSHIP WITH** convergence-continuum **RUN TIME** 60

A night of smutty monologues with your friends at convergence-continuum. Another war leaving the world in shambles. Gas prices are down right filthy. Data centers polluting our waters. Deserts with fast fashion piled to the heavens. Why does such greatness seem to leave such a stain? We embrace it. Ain't nothing too dirty. Ain't nowhere we won't stick our hands. Join us as we lean into the mess! **CONTENT ADVISORY\***

**SHOWS** Fri 7/10 @ 9:00PM, Sat 7/11 @ 9:00PM **GENRE** Play **RECOMMENDED** 18+ **TICKETS** Box Office Ticketed

4

IDEA CENTER - GUND DANCE STUDIO

## IT'S ALL A MESS!

AN EVENING OF **SMUTTY MONOLOGUES** WITH CONVERGENCE CONTINUUM



## JOURNEY WEST: THE EPIC DEVISED

**CREATED BY** Watch Party Productions  
**DIRECTED BY** Dana Sumpter **COVER ART BY** Léo Fez  
Devised from the full-length play, written by Michael Anderson **IN PARTNERSHIP WITH** CSU Dept. of Theatre and Dance **RUN TIME** 60

Through a series of monologues, memory pieces, and movement, jump on the train for Journey West: The Epic Devised, where the past catches up and the world changes whether you like it or not. **CONTENT ADVISORY\***

**SHOWS** Thu 7/9 @ 7:00PM, Fri 7/10 @ 5:15PM, Sat 7/11 @ 1:30PM, 5:45PM **GENRE** Physical Theatre **RECOMMENDED** 18+ **TICKETS** [FREE] Registration Required

2

(CSU) HELEN REHEARSAL HALL (504)



## SAWDUST

**WRITTEN BY** Micah A. Saunders  
**DIRECTED BY** Cece Brown  
IN PARTNERSHIP WITH CSU Dept. of Theatre and Dance **RUN TIME** 60

A train car crashes and leaves seven strangers stranded under piles of rubble. To pass the time until their rescue, they discuss their pasts and come to blows over their vast differences. Will they be able to work together to reach their common goal, or will they let their own needs come first? **CONTENT ADVISORY\***

**SHOWS** Thu 7/9 @ 5:15PM, Fri 7/10 @ 6:45PM, Sat 7/11 @ 12:00PM, 7:15PM **GENRE** Play **RECOMMENDED** 18+ **TICKETS** [FREE] Registration Required

2

(CSU) HELEN REHEARSAL HALL (504)





# PARTNER SHOWS

## THE LION, THE WITCH AND THE WARDROBE (TOURING VERSION)

**STORY BY** C.S. Lewis  
**DRAMATIZED BY** Le Clanché du Rand  
**DIRECTED BY** A'Rhyan Samford  
**IN PARTNERSHIP WITH** Talespinner Children's Theatre  
**RUN TIME** 45

Talespinner Children's Theatre presents a two-actor adaptation of The Lion, the Witch, and the Wardrobe, bringing Narnia to life through inventive storytelling and movement while exploring courage, kindness, and the triumph of good over evil.

**SHOWS** Sat 7/11 @ 12:00pm, 3:00pm **GENRE** Play  
**RECOMMENDED** All Ages **TICKETS** Box Office Ticketed

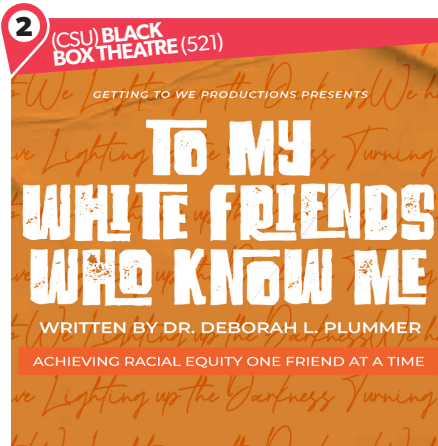


## TO MY WHITE FRIENDS WHO KNOW ME

**WRITTEN BY** Deborah L. Plummer  
**DIRECTED BY** Colleen Jackson  
**IN PARTNERSHIP WITH** Getting to We  
**RUN TIME** 50

Turning "us" and "them" into "we" is a goal that is achieved one cross-racial friendship at a time—but fostering those relationships can be painfully complicated. Debbie has a lot of White friends who have claimed her as their Black friend. Working to close the distance created by the systems between them, they begin a journey of accepting each other as fully human.

**SHOWS** Sat 7/11 @ 3:00PM, 4:20PM **GENRE** Play  
**RECOMMENDED** 13+ **TICKETS** Box Office Ticketed



**Bold Theatre. Affordable For All. YOU Make it Possible.**

Scan to give in seconds.

BorderLight brings bold, groundbreaking theatre to Cleveland—while keeping performances affordable and accessible. Your support helps sustain the festival and the artists who make it possible.

**Make bold theatre possible.**  
<https://bit.ly/supportborderlight>

**BorderLight**  
THEATRE FESTIVAL

# INVESTING IN CREATIVITY

## For You, By You

County residents make this arts experience possible through a public grant from Cuyahoga Arts & Culture.

[cacgrants.org](http://cacgrants.org)



**ILLUMINATING OUR VOICES**  
workshops

centering the creativity of people of color

upcoming writing workshops

more information

[www.IlluminatingOurVoices.org](http://www.IlluminatingOurVoices.org)

**THE HISSY KITS AT RUBY RAE'S HIDEAWAY**

PIANO • THEREMIN • VOICE  
A THEATRICAL CABARET

When Ruby's away the cats will play

Scan Me-ow



## THE ART OF BECOMING A SACRED BITCH!

**WRITTEN BY** Roschelle Ogbuji **DIRECTED BY** Brad Raymond  
**RUN TIME** 60

The Art of Becoming a Sacred Bitch is a ritual of survival and resurrection. Through poetic monologue, Roschelle Ogbuji confronts grief, rage, motherhood, faith, and desire. **CONTENT ADVISORY\***

**SHOWS** Thu 7/9 @ 8:30PM, Fri 7/10 @ 7:00PM, Sat 7/11 @ 8:30PM **GENRE** Storytelling Performance **RECOMMENDED** 18+ **TICKETS** Box Office Ticketed



## BELL, BOOK, AND DISCOUNT COCKTAILS

**CREATED BY** Amy Schwabauer and Carrie Williams  
**RUN TIME** 30

The Witches are back, and they're looking for a third (\*wink). Join the two remaining members of the legendary Shakespearean coven as they attempt to find a worthy replacement for the long-estranged Third Witch. **CONTENT ADVISORY\***

**SHOWS** Thu 7/9 @ 5:30PM, Sat 7/11 @ 1:30PM, 7:30PM **GENRE** Immersive/Interactive **RECOMMENDED** 18+ **TICKETS** [FREE] Registration Required

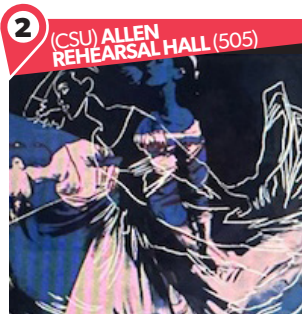


## BLESSED UNREST: A FANTASIA ON MARTHA GRAHAM'S DEMONS

**CREATED BY** Anne J. McEvoy **DIRECTED BY** Jamie Koeth  
**RUN TIME** 40

Breaking her years of silence and isolation, Martha is unexpectedly holding an intimate gathering to witness a prickly pivotal moment. Known for her mercurial nature, any visit with Martha promises to be unpredictable. **CONTENT ADVISORY\***

**SHOWS** Thu 7/9 @ 5:30PM, Sat 7/11 @ 1:30PM, 6:45PM **GENRE** Play **RECOMMENDED** 18+ **TICKETS** Box Office Ticketed



## ENJOY THIS EP

**BOOK, MUSIC, LYRICS & DIRECTED BY** Paige Scott  
**RUN TIME** 60

A cranky music critic gets tasked to review an album written by his ex only to discover that all of the songs are about him.

**SHOWS** Thu 7/9 @ 8:00PM, Fri 7/10 @ 6:30PM, Sat 7/11 @ 2:00PM, 7:00PM **GENRE** Play/Musical **RECOMMENDED** 18+ **TICKETS** Box Office Ticketed



## EXPERIMENTS IN EXHAUSTION TECHNOLOGY

**COMPOSED BY** Clifton

Fill out the form, spin a wheel, and roll the dice. Now what? A song? A talking mannequin? A game? Kick a can aside, and puzzle over this changing show: live, with audio and video. **CONTENT ADVISORY\***

**SHOWS** Thu 7/9 @ 7:00PM, Fri 7/10 @ 7:00PM, Sat 7/11 @ 4:00PM, 7:00PM **GENRE** Performance Art **RECOMMENDED** 13+ **TICKETS** [FREE]

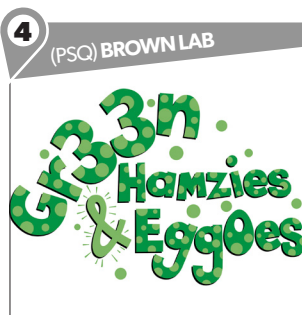


## GR33N HAMZIES & EGGOES

**CREATED BY** Faye Hargate, Joan Hargate, Jeremy Paul, and Renee Schilling  
**DIRECTED BY** Faye Hargate

Explore a childhood classic, but scrambled. "Gr33n Hamzies & Eggoes" invites audiences of all ages to enter a sensory world of whim and whimsy. Designed to be a low-fi calming space, families are encouraged to gently explore together.

**SHOWS** Thu 7/9 @ 5:30-8:30PM **MASKS REQUIRED**, Fri 7/10 @ 5:30-8:30PM, Sat 7/11 @ 12:00-4:00PM **GENRE** Immersive/Interactive **RECOMMENDED** All Ages **TICKETS** [FREE]

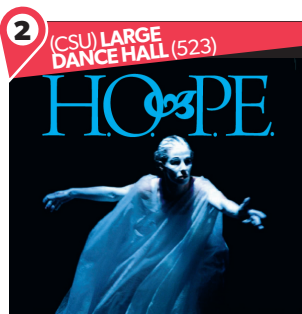


## H.O.P.E.

**CREATED, DIRECTED & PERFORMED (BY)** Natasha Mirny  
**RUN TIME** 50

Physical theater solo show inspired by the ancient Greek legend of Pandora. The piece combines the elements of dance (including butoh), physical theater, and object theater.

**SHOWS** Thu 7/9 @ 8:15PM, Fri 7/10 @ 5:45PM, Sat 7/11 @ 6:30PM **GENRE** Dance/Dance Theatre **RECOMMENDED** 13+ **TICKETS** Box Office Ticketed



## THE HISSY KITS AT RUBY RAE'S HIDEAWAY

**WRITTEN & CREATED BY** K&K  
**RUN TIME** 55

A fading supper club owner resists the modern world until her cats secretly go viral after a nationally televised talent show appearance. As supper club patrons return, she transforms the room into a living cabaret where past and present collide.

**SHOWS** Thu 7/9 @ 5:45PM, Fri 7/10 @ 9:00PM, Sat /11 @ 3:30PM **GENRE** Cabaret **RECOMMENDED** 13+ **TICKETS** Box Office Ticketed



# FRINGE FESTIVAL

## IMPROVSBURG

**CREATED BY** Chrysalis Goring and Victoria Goring  
**RUN TIME** 55

Improvised Game show from your suggestions! The Actors Improvise a game show of improv where each contestant creates theatre live from the audience suggestions. Watching the contestants sweat is most of the fun!

**SHOWS** Thu 7/9 @ 6:30PM MASKS REQUIRED, 7/10 @ 9:00PM, 7/11 @ 12:30PM, 7/11 @ 5:30PM **GENRE** Comedy/Stand-up Comedy **RECOMMENDED** All Ages **TICKETS** Box Office Ticketed

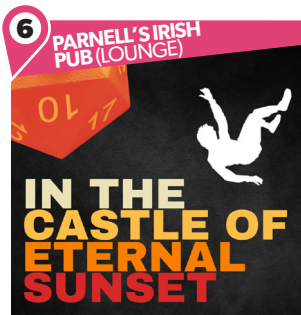


## IN THE CASTLE OF ETERNAL SUNSET

**CONCEIVED BY** Charles Green  
**DIRECTED BY** Ethan Graham Roeder  
**RUN TIME** 45

An intimate, interactive ode to boyhood. As the characters play their final session of Dungeons and Dragons, live die rolls prompt audience members to read aloud texts containing the 300,000+ possibilities of how the boys' lives might unfold. **CONTENT ADVISORY\***

**SHOWS** Thu 7/9 @ 6:00PM, Fri 7/10 @ 8:00PM, Sat 7/11 @ 5:00PM, 7/11 @ 8:00PM **GENRE** Immersive/Interactive **RECOMMENDED** 13+ **TICKETS** Box Office Ticketed



## KLAUS BARBIE VERSUS THE US GOVERNMENT

**CREATED BY** Thomas Zipp  
**RUN TIME** 50

Known as the "Butcher of Lyon," Klaus Barbie was responsible for the deaths of thousands of French citizens and the deportation of many more, including children, to concentration camps. Barbie was convicted of crimes against humanity.

**SHOWS** Thu 7/9 @ 7:15PM, Fri 7/10 @ 6:30PM, Sat 7/11 @ 6:30PM **GENRE** Immersive/Interactive **RECOMMENDED** 13+ **TICKETS** **FREE** | Registration Required



## LE TOURNESOL INTERNATIONAL FRINGE

**CREATED BY** KOW Xiao Jun, Louis COMTE & Nadiya ATKINSON  
**RUN TIME** 50

In Metalliosis, a new life emerges. A catastrophe hits, a seed grows into a colossal plant-like creature. As the new life follows its curiosity, it encounters multiple different worlds as it climbs.

**SHOWS** Thu 7/9 @ 8:30PM MASKS REQUIRED, Fri 7/10 @ 5:30PM, Sat 7/11 @ 5:00PM **GENRE** Children's Theatre/Youth Theatre **RECOMMENDED** All Ages **TICKETS** Box Office Ticketed



## LUMP

**WRITTEN BY** Sam Dee **DIRECTED BY** Jonah Raider-Roth  
**RUN TIME** 40

A dark comedy about a mysterious growth that develops into a crisis of medical futility, bodily autonomy and a budding cult. LUMP unpacks how we deal with our inconstant anatomy and its inevitable betrayal.

**SHOWS** Thu 7/9 @ 6:45PM, Fri 7/10 @ 6:00PM, Sat 7/11 @ 4:15PM, 7/11 @ 9:15PM **GENRE** Play **RECOMMENDED** 18+ **TICKETS** Box Office Ticketed



## OUR SOULS DID TOUCH

**WRITTEN BY** Kierstan Kathleen Conway  
**DIRECTED BY** Erin K. Moran  
**RUN TIME** 45

An actress and a journalist in Golden Age of Hollywood have four chance encounters where they explore their fears, desires, and love for one another while just on the brink of being caught by the unforgiving world surrounding them. **CONTENT ADVISORY\***

**SHOWS** Thu 7/9 @ 8:00PM, Fri 7/10 @ 6:00PM, Sat 7/11 @ 4:00PM **GENRE** Play **RECOMMENDED** 13+ **TICKETS** Box Office Ticketed



## PEACE(CO)LAB

**CREATED & DIRECTED BY** Tia Shearer Bassett and Natasha Mirny

The Peace (co)Lab: Tiny Play Experience. Listen to an immersive story under the ribbon umbrella and have a tiny play written especially for you.

**SHOWS** Thu 7/9 @ 5:00-7:30PM, Fri 7/10 @ 7:15-9:30PM, Sat 7/11 @ 12:00-2:30PM, 3:30-5:45PM **GENRE** Immersive/Interactive **RECOMMENDED** All Ages **TICKETS** **FREE**



## PORTRAIT OF MATTMATT

**WRITTEN & DIRECTED BY** Matthew Thompson  
**RUN TIME** 60

Portrait of MATTMATT is a one-person variety show by Ohio poet and musician MATTMATT RAYBEAM. He fuses original music, comedy, and live improvisation into a high-energy, genre-blurring performance about identity, persona, and becoming.

**SHOWS** Thu 7/9 @ 8:00PM, Fri 7/10 @ 7:30PM, Sat 7/11 @ 12:00PM, 2:45PM **GENRE** Music **RECOMMENDED** 13+ **TICKETS** Box Office Ticketed



# FRINGE FESTIVAL

## POSTCARDS FROM ANOTHER WORLD

**CREATED & PERFORMED BY** Nadia Tarnawsky and Vira Hanchar  
**DIRECTED BY** Nadia Tarnawsky  
**RUN TIME** 30

Postcards share a glimpse of an experience in a far away place, although what is shared can change when those missives are sent from a war zone. Postcards from Another World offers images, personal stories and folk songs from Ukraine. **CONTENT ADVISORY\***

**SHOWS** Thu 7/9 @ 5:30PM, Fri 7/10 @ 8:00PM, Sat 7/11 @ 4:30PM, 9:30PM **GENRE** Multimedia **RECOMMENDED** All Ages  
**TICKETS** **FREE** | Registration Required



## THE PROTEST CAFÉ

**CREATED BY** Chennelle Bryant-Harris, Chelsea Cannon, Tina D. Stump, and Eric Schmiedl  
**RUN TIME** 30

THE PROTEST CAFÉ draws from 250 years of American protest music to fuse theatre, history, and music into an experience that transforms our understanding of the past and points us toward our future!

**SHOWS** Thu 7/9 @ 5:15PM, Fri 7/10 @ 8:15PM, Sat 7/11 @ 1:15PM, 6:45PM **GENRE** Cabaret **RECOMMENDED** 13+ **TICKETS** **FREE** | Registration Required



## REAL MAGIC

**WRITTEN & DIRECTED BY** Jordan Allen  
**RUN TIME** 60

An exciting interactive experience you won't have anywhere else! Find magic in the ordinary - to escape the ordinary! A show jam-packed with comedy, magical surprises & fascinating stories. Feel magic, experience magic & escape the mundane.

**SHOWS** Fri 7/10 @ 8:45PM, Sat 7/11 @ 2:30PM, 6:00PM **GENRE** Cabaret **RECOMMENDED** 13+ **TICKETS** Box Office Ticketed



## THE SOLEÁ PROJECT

**CREATED BY** Carmen Alcorn, Marie Carr, Missy Grieco, Tianyi Guo, Rebecca Walker, Natalie Weaver, Sujata Lakhe and Alice Lawhorn  
**DIRECTED BY** Alice Lawhorn **RUN TIME** 20

With flamenco's soleá style as a point of departure, we explore our relationship to grief, solitude, community, and healing through movement, poetry, and voice. The work is the result of therapeutic arts and devised theater processes. **CONTENT ADVISORY\***

**SHOWS** Fri 7/10 @ 6:00PM, Sat 7/11 @ 4:15PM **GENRE** Dance/Dance Theatre **RECOMMENDED** All Ages **TICKETS** Box Office Ticketed



## THE STARS MADE ME GAY

**CREATED BY** Lauren Lash **DIRECTED BY** Kari Barclay  
**RUN TIME** 50

Come experience a powerful collection of monologues and scenes crafted ~90% verbatim from interviews with members of the LGBTQIA+ community. This piece captures heartfelt stories of identity, resilience, and the search for belonging. **CONTENT ADVISORY\***

**SHOWS** Fri 7/10 @ 8:15PM, Sat 7/11 @ 3:00PM, 10:10PM **GENRE** Play **RECOMMENDED** 13+ **TICKETS** Box Office Ticketed



## TALES FROM THE BARD

**CREATED BY** Mike Frye  
**RUN TIME** 30

Everyday heroes walk among us, but their tales have yet to be told. Using song, audience participation, and the ancient bardic tradition, The Bard will elevate one person's success into an epic tale worthy of remembrance.

**SHOWS** Thu 7/9 @ 6:45PM, Fri 7/10 @ 6:30PM, Sat 7/11 @ 12:15PM, 5:45PM **GENRE** Immersive/Interactive **RECOMMENDED** All Ages **TICKETS** **FREE** | Registration Required



## TINA'S AT THE END OF THE WORLD, LIVE!

**CREATED BY** Viva La Rossa and Mike Wendt Productions  
**DIRECTED BY** Nicole Rossa **RUN TIME** 60

A legendary neighborhood watering hole promises cheap drinks and the wildest night of karaoke you have ever seen. Dreams come true in this documentary film premiere and immersive karaoke experience featuring the stars of the documentary and you! **CONTENT ADVISORY\***

**SHOWS** Thu 7/9 @ 7:00PM, Fri 7/10 @ 8:30PM, Sat 7/11 @ 7:00PM **GENRE** Immersive/Interactive **RECOMMENDED** 13+ **TICKETS** Box Office Ticketed



## WELL-BALANCED DADS

**CREATED BY** Britt Anderson and Richie Schiraldi  
**RUN TIME** 55

Using physical comedy, partner acrobatics, and dad humor, Dick and Dale take the audience on a camping adventure complete with car games, dance numbers, a cheese stick fight, and plenty of unthreatening audience participation.

**SHOWS** Thu 7/9 @ 7:30PM, Fri 7/10 @ 7:00PM, Sat 7/11 @ 12:30PM, 7:00PM **GENRE** Circus **RECOMMENDED** All Ages **TICKETS** Box Office Ticketed



# FRINGE FESTIVAL

## WHO AM I, AGAIN?

**WRITTEN, DIRECTED & PERFORMED BY** Lethan Candlish  
**RUN TIME** 55

Brain injury survivor Lethan Candlish engages the audience using clear, eloquent, honest narration that shares the maze of loneliness, fear, and identity reconstruction that is part of brain trauma. This piece presents the real experience of recovery as seen from multiple perspectives - blending difficult moments of confusion and struggle with joyous moments of humor and self-appreciation. **CONTENT ADVISORY.**

**SHOWS** Thu 7/9 @ 8:30pm, Fri 7/10 @ 9:35pm, Sat 7/11 @ 4:20pm, 8:45pm **GENRE** Play **RECOMMENDED** 13+ **TICKETS** Box Office Ticketed

## WORD PLAY

**WRITTEN & PERFORMED BY** Kari Barclay  
**DIRECTED BY** Carrie Williams  
**RUN TIME** 40

Asexuality? Gayness? Mamma Mia? How do they intersect? In a solo show about crossword puzzles, of course. This new comedic play show explores coming out, finding language, and sex's marvelous intersection with America's favorite word game. **CONTENT ADVISORY\***

**SHOWS** Fri 7/10 @ 9:00PM MASKS REQUIRED, Sat 7/11 @ 5:30PM, 8:00PM **GENRE** Play **RECOMMENDED** 13+ **TICKETS** Box Office Ticketed



# DOUBLE BILLS

\*Show times are subject to change. Visit [borderlightcle.org](http://borderlightcle.org) for updates and content advisories.

**Two short works, one ticket. Performed back-to-back with a brief pause in between. Stay for the full program to experience both pieces.**

## BUTTERFLY HARVEST

**CHOREOGRAPHED & DIRECTED BY** Oscar Suh-Rodriguez  
**RUN TIME** 20

This solo Butoh tale conveys the the story of a butterfly farmer waking to gather himself before the blue hour of dawn—just before the sounds of nature shift from toads to birds.

**SHOWS** Thu 7/9 @ 5:45PM, Fri 7/10 @ 9:15PM, 7/11 @ 4:00pm **GENRE** Storytelling Performance **RECOMMENDED** 13+ **TICKETS** Box Office Ticketed



## NOTHING IN THE WORLD LIKE LOVE?

**CREATED & CHOREOGRAPHED BY** Sophia Wheeler  
**RUN TIME** 20

This dance theater piece explores the epidemic of men responding to conversations about violence and harassment with the phrase, "not all men." And while that may be true, it misses the deeper reality: it is all women. **CONTENT ADVISORY\***

**SHOWS** Thu 7/9 @ 5:45PM, Fri 7/10 @ 9:15PM, Sat 7/11 @ 4:00PM **GENRE** Dance/Dance Theatre **RECOMMENDED** 13+ **TICKETS** Box Office Ticketed



## IN VISIBLE ORBIT

**CREATED & DANCED BY** Cody (Greenhouse) Clark  
**RUN TIME** 20

An original dance show by choreographer Greenhouse examines "invisible" disabilities and explores chronic illness under capitalism. They ask if any disabilities are truly invisible, or if society just refuses to see the needs of the disabled person.

**SHOWS** Thu 7/9 @ 7:15PM MASKS REQUIRED, Fri 7/10 @ 7:15PM, Sat 7/11 @ 2:00PM, 8:15PM **GENRE** Dance/Dance Theatre **RECOMMENDED** 13+ **TICKETS** Box Office Ticketed

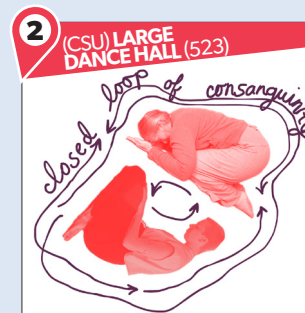


## CLOSED LOOP OF CONSANGUINITY

**DEvised & PERFORMED BY** Emily Liptow and Carol Laursen  
**RUN TIME** 30

To whom or what do you bow? Witness and sense your belonging in the complex web of relations, seen and unseen. Through a visceral, physical exploration of bowing, performers express forms of devotion, power, and right relationship.

**SHOWS** Thu 7/9 @ 7:15PM MASKS REQUIRED, Fri 7/10 @ 7:15PM, Sat 7/11 @ 2:00PM & 8:15PM **GENRE** Dance/Dance Theatre **RECOMMENDED** 13+ **TICKETS** Box Office Ticketed



Great things happen  
when good people collaborate!



PalmerEventSolutions.com

## master PRINTING + MAILING

booklets • brochures • business cards  
digital & offset printing • envelopes  
flyers • forms • folders • invitations  
posters • labels • letterhead • magnets  
mailing services • newsletters  
self mailers • banners • signage  
design • marketing consultations  
and much more!

Proudly Printed.  
Veteran Owned. Union Strong.

## CONTACT US TODAY!

info@masterprinting.in  
or call 216-351-2246  
95 Pelret Industrial Pkwy  
Berea, OH 44017  
www.MasterPrinting.in





# DOUBLE BILLS

## NEW BUT FAMILIAR

**CREATED BY** Lindsey Ball  
**RUN TIME** 30

Through toy theater, crankie, and shadow puppetry, a personal landscape of queer evolution is revealed. Where aging is celebrated and families are chosen. Where the future is built by us and for us. Come for the community, stay for the catharsis. **CONTENT ADVISORY\*** **MASKS REQUIRED.**

**SHOWS** Thu 7/9 @ 9:30PM, Fri 7/10 @ 5:30PM, Sat 7/11 @ 3:30PM, 8:30PM **GENRE** Performance Art **RECOMMENDED** 18+ **TICKETS** Box Office Ticketed



## SHEEL SHEEL

**CREATED BY** Diana Sette  
**RUN TIME** 10

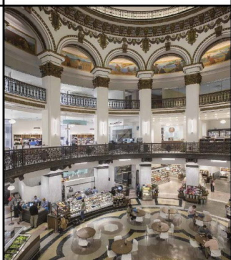
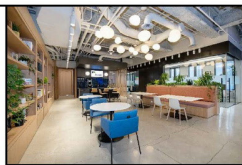
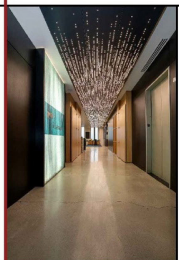
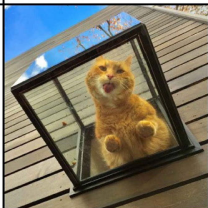
To witness. To transform grief. Will you accept the humble invitation of a walk in Occupied Palestine? Inspired by Gaza Birds Singing Founder, Ahmed "Muin" Abu Amsa's folksong adapted from the chorus of Libre Palestina by Zaid Hilal. **CONTENT ADVISORY\*** **MASKS REQUIRED**

**SHOWS** Thu 7/9 @ 9:30pm, Fri 7/10 @ 5:30pm, Sat 7/11 @ 3:30pm, 8:30pm **GENRE** Puppetry **RECOMMENDED** All Ages **TICKETS** Box Office Ticketed

Architecture  
is theater...  
a stage in real life.



Act like a cat.



**PROCESS** | CREATIVE STUDIOS  
Design | Architecture + Interiors

# LEE HEINEN STUDIO

Contemporary Fine Art



*Searching for a Muse 30" x 30"*



*The Dance 36" x 36"*

Visits by Appointment

12402 Mayfield Rd., Cleveland, Ohio 44106

leeheinen@gmail.com

# LET'S PARTY!

From opening night to final curtain, join us offstage for shared moments, surprises, and celebration.



FRIDAY, JULY 10  
7:30-11PM

Linedance Is My Therapy brings community together through music, movement, and connection. All ages will enjoy high-energy dancing, positive vibes, and a welcoming space.

5 PLAYHOUSE SQUARE PLAZA

**FREE**

**Fringe Finale**  
Wrap & Awards Party

SATURDAY, JULY 11  
9-11:30PM

Close out the festival with artists, awards, and a final celebration.

3 THE HERMIT CLUB  
1629 Dodge Court



**Fringe Unleashed**  
Previews • Pop Ups • Live Performances

WEDNESDAY, JULY 8  
7-9:30PM

Opening night energy with live performances, artist pitches, light bites, and a chance to map out your festival.

Sponsored by Woodland Wealth Partners

7 THE CITY CLUB OF CLEVELAND  
1317 Euclid Ave



**\$10**

## LET'S EAT!

Show your same-day BorderLight ticket and enjoy special offers from our neighborhood partners.



HOFBRÄUHAUS CLEVELAND

**10% OFF**  
Hofbräuhaus Cleveland  
Chester Avenue

Valid during the festival dates only. Please mention BorderLight when ordering.



**15% OFF**  
Something Good Social Kitchen  
Playhouse Square Plaza



WRITTEN AND PERFORMED BY  
ROSCHELLE OGBUJI  
Featuring: Nkiruka "CeCe" Ogbuji

## THE ART OF BECOMING A Sacred Bitch!

Through poetic monologue, Roschelle Ogbuji confronts grief, rage, motherhood, faith, and desire in an intimate solo performance.

JULY 9-11

Parnell's Irish Pub  
The Snug



Scan for Tickets

Find chosen family through queer fantasy & Shakespeare.  
*You're loved. You're not alone.*

- Queer-led streaming platform!
- Subscribe: [beksroen.org/rgs](https://beksroen.org/rgs)
- VIP: [beksroen.org/rgs#vip](https://beksroen.org/rgs#vip)

THE ASTOUNDING  
**JORDAN ALLEN**  
**REAL MAGIC**

3 PERFORMANCES | JULY 10-11  
THE HERMIT CLUB  
SCAN FOR SHOW INFORMATION

DIRECTED BY SCOTT SPENCE  
CHOREOGRAPHY BY LAUREN MAROUSEK

BOOK BY TINA FEY  
ADAPTED FROM FEY'S HIT 2004 FILM, *MEAN GIRLS*  
LYRICS BY NELL BENJAMIN  
MUSIC BY JEFF RICHMOND



# MEAN GIRLS

JUL 10 - AUG 9, 2026

SENNEY THEATER  
TICKETS START AT JUST \$15 SMART SEATS  
BECKCENTER.ORG | 216-521-2540



Beck Center FOR THE arts



cleveland PUBLIC theatre

Breaking ground since 1981.



6415 Detroit Ave.  
Cleveland, OH 44102  
www.cptonline.org

WHO AM I, AGAIN?



Now playing at BorderLight 2026. Scan for showtimes + tickets

Navigating Loneliness while claiming Identity after Trauma



www.LethanCandlish.com  
@lethancandlish

# FESTIVAL SCHEDULE

SCHEDULE WEDNESDAY, 7/8



7PM

15

30

45

8PM

15

30

45

9PM

15

30

45

10PM

**SPECIAL EVENT**

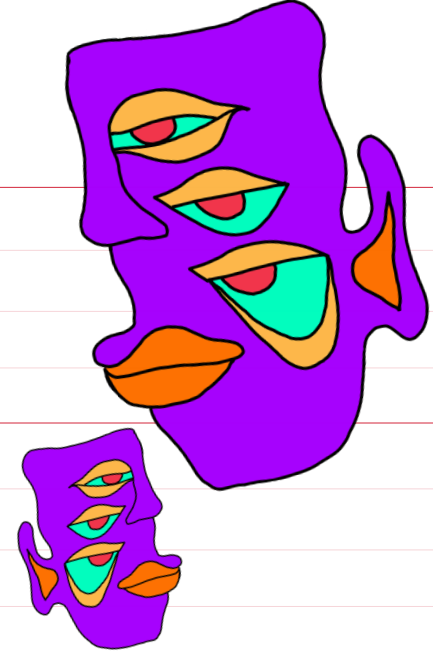
**Fringe Unleashed**

- PREVIEWS •
- POP UPS •
- LIVE PERFORMANCES •

7-9:30PM

**\$10**

Sponsored by:  
Woodland Wealth Partners



Scan to view all festival details!

# International Plaza



**During the festival, Playhouse Square Plaza becomes the International Plaza.**

Enjoy free shows, seating, and great people-watching.  
Scan the QR code for details.

# SCHEDULE THURSDAY, 7/9

**1**  
LOADING DOCK

**2**  
CSU THEATRE & ARTS BLDG

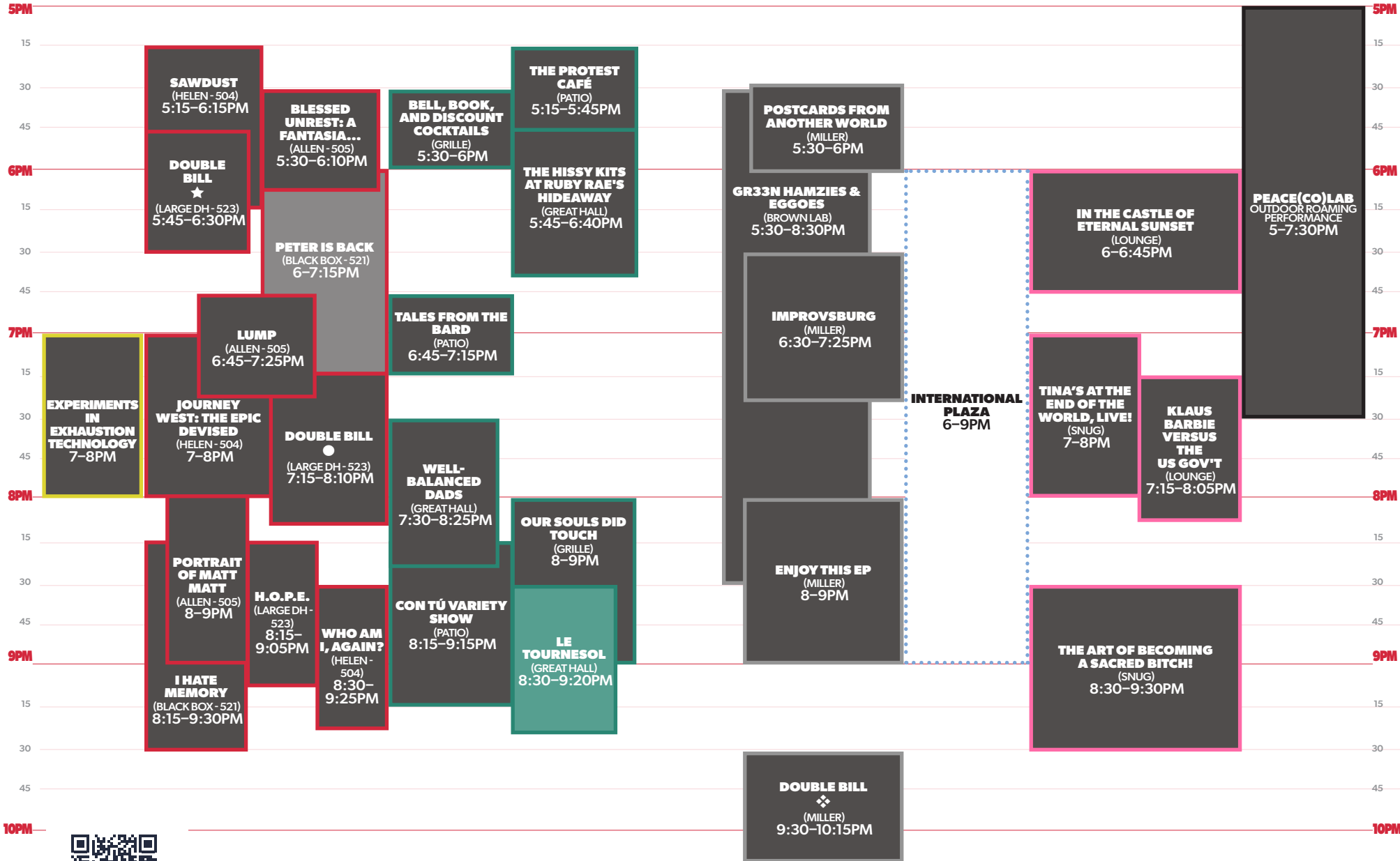
**3**  
HERMIT CLUB

**4**  
IDEA CENTER @PSQ

**5**  
PLAYHOUSE SQUARE PLAZA

**6**  
PARNELL'S

ROAMING SHOWS



Scan to view all festival details!

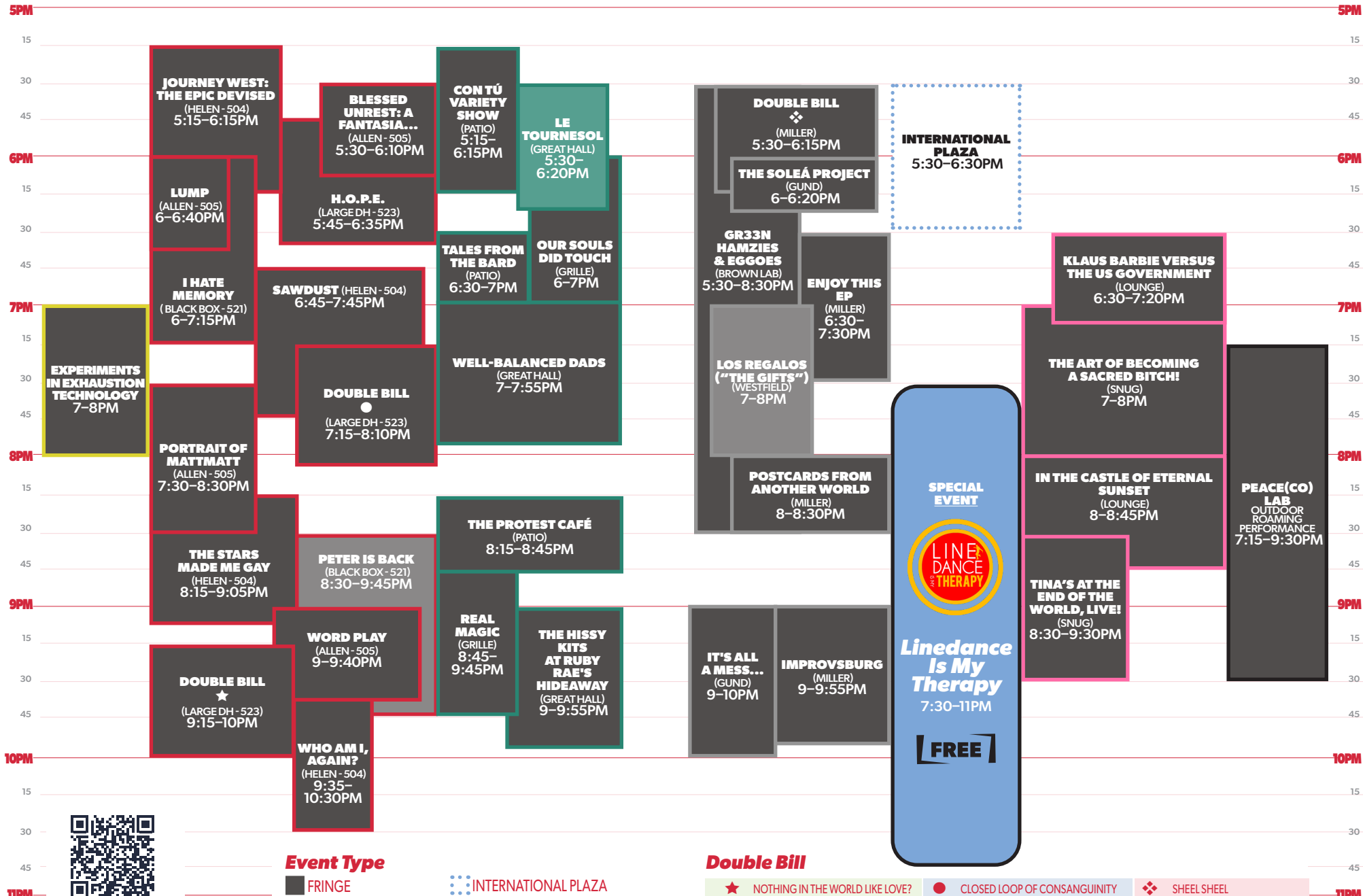
### Event Type

- FRINGE
- INTERNATIONAL
- INTERNATIONAL PLAZA
- INTERNATIONAL FRINGE

### Double Bill

- ★ NOTHING IN THE WORLD LIKE LOVE? BUTTERFLY HARVEST
- CLOSED LOOP OF CONSANGUINITY IN VISIBLE ORBIT
- ❖ SHEEL SHEEL NEW BUT FAMILIAR

# SCHEDULE FRIDAY, 7/10



Scan to view all festival details!

### Event Type

- FRINGE
- INTERNATIONAL

- INTERNATIONAL PLAZA
- INTERNATIONAL FRINGE

### Double Bill

- ★ NOTHING IN THE WORLD LIKE LOVE? BUTTERFLY HARVEST
- CLOSED LOOP OF CONSANGUINITY IN VISIBLE ORBIT
- ❖ SHEEL SHEEL NEW BUT FAMILIAR

# SCHEDULE SATURDAY, 7/11

**1** **LOADING DOCK**  
EXPERIMENTS  
IN EXHAUSTION  
TECHNOLOGY

**2** **CSU THEATRE  
& ARTS  
BLDG**

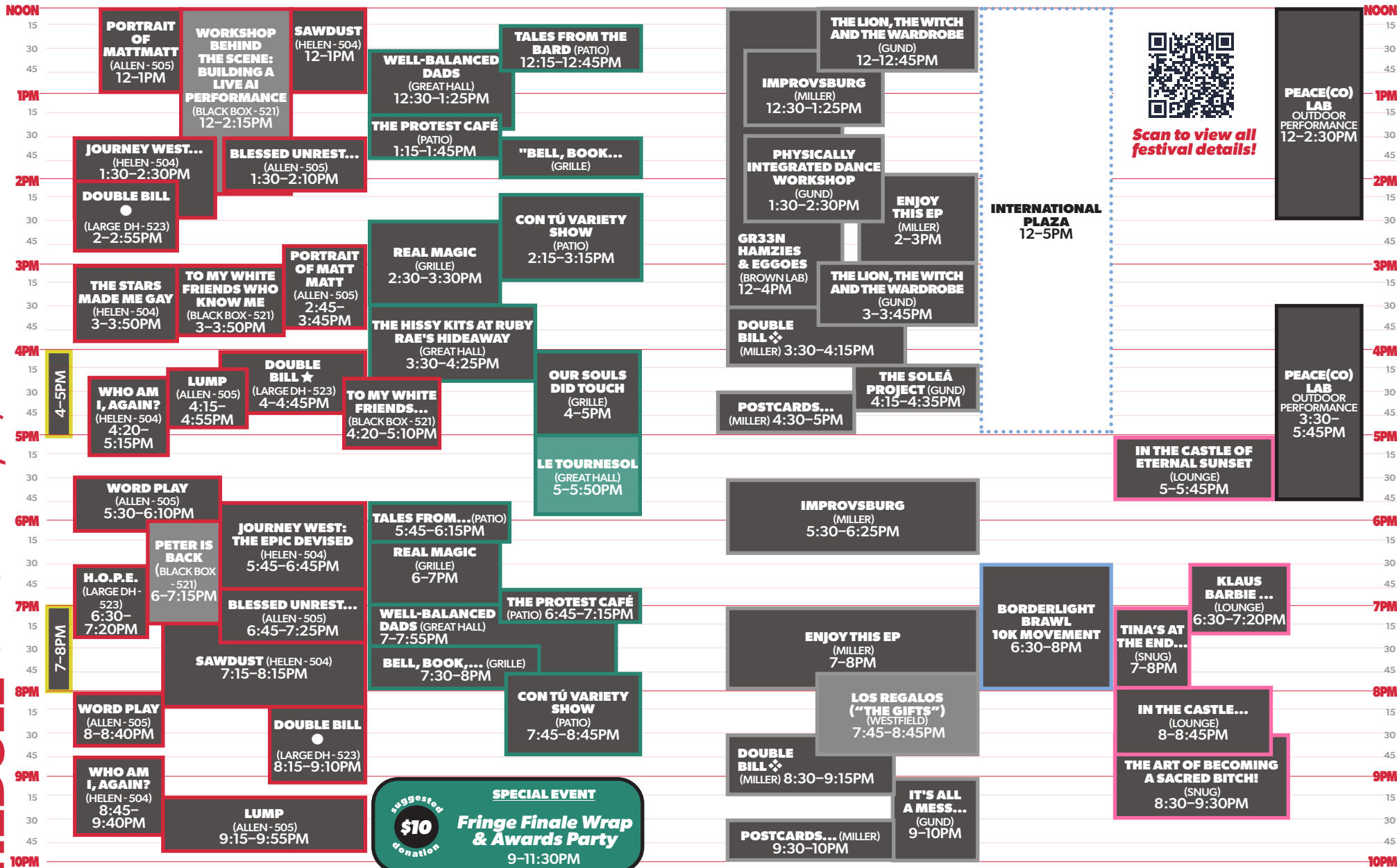
**3** **HERMIT  
CLUB**

**4** **IDEA  
CENTER  
@PSQ**

**5** **PLAYHOUSE  
SQUARE  
PLAZA**

**6** **PARNELL'S**

**ROAMING  
SHOWS**



**THE STARS MADE ME GAY**  
(HELEN - 504)  
10:10-11PM

**Event Type**

- FRINGE
- INTERNATIONAL
- INTERNATIONAL PLAZA
- INTERNATIONAL FRINGE

**Double Bill**

- ★ NOTHING IN THE WORLD LIKE LOVE? BUTTERFLY HARVEST
- CLOSED LOOP OF CONSANGUINITY IN VISIBLE ORBIT
- ❖ SHEEL SHEEL NEW BUT FAMILIAR

**THANK YOU!**

**We gratefully recognize the following supporters who have contributed \$250 or more in the past 12 months.**

Anonymous  
 Audra T. Jones  
 Audrey Heinen  
 Betsy Stueber  
 Carrie Gustafson  
 Char and Chuck Fowler\*  
 Dan and Dorothy Moulthrop\*  
 Fran and Jules Belkin  
 Fred Bidwell  
 Gina Abercrombie-Winstanley\*  
 Hilda Perea  
 Holley and Rob Martens  
 Jason R. Bristol\*  
 Jenny Pykett\*  
 Joe Heinen  
 John C. Williams  
 Laura and Jon Bloomberg\*

Lauren Rich Fine  
 Lee Heinen  
 LuAnn and Andy Brown  
 Luis Cartagena\*  
 Megan O'Bryan\*  
 Mike and Hannah Belsito\*  
 Pam Neides  
 Patrick Walker  
 Rab Razzak and Nazleen Bharmal\*  
 Rachel Costanzo and Len Olsavsky\*  
 Rebecca Dunn  
 Stewart Kohl  
 Sus Abogados Latinos\*  
 Susan Spector  
 Terry and Sally Stewart\*  
 The Poetry Psychic Project

\*Member of the BorderLight Board of Directors



**SPECIAL THANKS!**

**Special thanks to these individuals and partners whose help and dedication have gone above and beyond in helping bring the BorderLight Festival to life.**

Brooke Little  
 David Stoughton, *Cleveland State University*  
 Debby Rosenthal, *John Carroll University*  
 Gwyneth Seddon  
 Jason Hamad, *No Surf House*  
 Jessica Vinson  
 Jon and Laura Bloomberg  
 Neil Macke, *Playhouse Square*  
 Palmer Event Solutions  
 Ricky Smith, *Something Good Social Kitchen*  
 Rock The House

The BorderLight Board of Directors  
 The City Club of Cleveland  
 Thomas J. Humphrey, *Cleveland State University*



**Cleveland**

**Say hello**  
**TO YOUR NEW FAVORITE PLANNER**  
**FOR THE LAND**

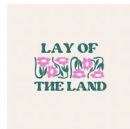
**DOWNLOAD THE CLEVELAND APP NOW**

**THISISCLEVELAND.COM/APP**

**THANK YOU!**

**MEDIA PARTNERS**

These partners help share BorderLight's stories, artists, and impact, expanding the festival's reach and helping more people discover the work happening on and beyond the stage.



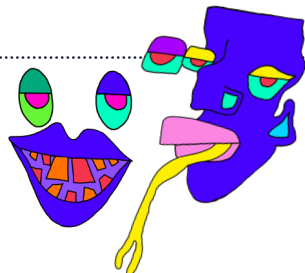
**NEIGHBORHOOD PARTNERS**



**BE PART OF THIS YEAR'S FESTIVITIES!**



Media partner opportunities are still available. Connect with us at [debby@borderlightcle.org](mailto:debby@borderlightcle.org).



NEAR WEST THEATRE PRESENTS

# RAGTIME

JULY 17 - AUGUST 2, 2026

TICKETS: \$20  
PAY WHAT YOU CHOOSE OPTIONS AVAILABLE

GET YOUR TICKETS BY SCANNING THE QR CODE OR AT [NEARWESTTHEATRE.ORG](http://NEARWESTTHEATRE.ORG)

|   |                 |
|---|-----------------|
| <b>DAPHNE'S DIVE</b><br>by Quiara Alegria Hudes<br><i>a moving comedy about finding family in the local bar</i> | SEP 24 - OCT 18 |
| <b>A SHERLOCK CAROL</b><br>by Mark Shanahan<br><i>a holiday adventure filled with comedy and carols</i>         | DEC 3 - JAN 3   |
| <b>WALDEN</b><br>by Amy Berryman<br><i>a thoughtful drama meets eco-suspense thriller</i>                       | JAN 28 - FEB 21 |
| <b>MARY JANE</b><br>by Amy Herzog<br><i>a slice-of-life play about a mother's optimism</i>                      | MAR 11 - APR 4  |
| <b>NETTA &amp; RU</b><br>by Lisa Langford<br><i>a southern gothic about secrets, murder, and magic</i>          | APR 22 - MAY 16 |

**DOBAMA CLEVELAND'S OFF-BROADWAY THEATRE**

26/27 memberships on sale now

[dobama.org](http://dobama.org)

# THANK YOU!

## COMMUNITY PARTNERS

These organizations help connect BorderLight with neighborhoods, families, and audiences across Cleveland, creating access points for people to experience the festival in meaningful ways.



Cuyahoga Community College  
School of Creative Arts

HOFBRÄUHAUS  
CLEVELAND



PERUCAN-OH  
PERUVIAN CULTURAL ASSOCIATION  
OF NORTHEAST OHIO



THE CITY CLUB OF  
CLEVELAND



## LOVE BORDERLIGHT? Stay Connected Year Round.

Join our email list or make a gift today.

### YOU GET:

- Festival news and ticket announcements
- Invitations to special events and performances
- Behind the scenes updates and exclusive content
- Opportunities to support artists and creative work in Cleveland



Scan the code or visit [borderlightcle.org](http://borderlightcle.org) to join.

We're proud to play a **small role** in the **big world** of international theater.

Thank you, BorderLight community, for all that you create.



[jetpackgroup.com](http://jetpackgroup.com)



ORDINARY KIDS

EXTRAORDINARY  
TALENT

[PIANOCLEVELAND.ORG](http://PIANOCLEVELAND.ORG)



WITH GRATITUDE TO OUR GENEROUS SUPPORTERS:

THE  
GEORGE  
GUND  
FOUNDATION

PAUL M. ANGELL  
FAMILY FOUNDATION

CLEVELAND  
Foundation



Char and Chuck Fowler

James Anderson &  
David Wittkowsky



IN KIND:



We thank Cuyahoga Community College  
for sponsoring this Festival Guide!